

Requirements CHECKLIST for the MBA degree

Core Requirements Total Core Credits Required: 55

Quarter/year

BA 530	Competing in a Global Environment (prerequisites: admission to MBA)	8 credits	_____
Actg 511	Financial Accounting (prereq: admission to MBA)	4 credits	_____
Fin 514	Economics & Financial Mgmt (prereq: admission to MBA)	4 credits	_____
ISQA 511	Quantitative Methods (prereq: admission to MBA)	4 credits	_____
Mktg 544	Marketing (prereq: BA 530)	4 credits	_____
Mgmt 550	Organizational Management (prereq: BA 530)	4 credits	_____
Mgmt 560	Managerial Resp. & Public Policy (prereq: BA 530, Mgmt 550)	4 credits	_____
Fin 561	Financial Management (prereq: BA 530, Fin 514, Actg 511)	4 credits	_____
BA 551	Integrated Process Management (prereq: ISQA 511, Actg 511, and concurrent enrollment in BA 552)	4 credits	_____
BA 552	Systems for Perf. Measurement (prereq: ISQA 511, Actg 511, and concurrent enrollment in BA 551)	4 credits	_____
Mgmt 562	Business Strategy and Policy (prereq: BA 551, BA 552)	4 credits	_____
BA 506	Business Project (prereq: completion of 37 credits of the MBA core sequence)	6 credits	_____
BA 531	Executive Briefings (prereq: admission to MBA)	1 credit	_____

Electives Total Elective Credits Required: 17

Slash: Y/N _____ Elective _____ credits _____

_____ Elective _____ credits _____

_____ Elective _____ credits _____

_____ Elective _____ credits _____

_____ Elective _____ credits _____

_____ Elective _____ credits _____

A maximum of 8 credits of electives may be "**slash**" credits (400/500 level coursework taken for graduate credit). A **slash** class is listed in the Schedule with the letter "S" at the end of the course number (ex. Mgmt 510S). **Students** are responsible for tracking and limiting their **slash** credits.

Total Core Credits Completed: _____

Total Elective Credits Completed: _____

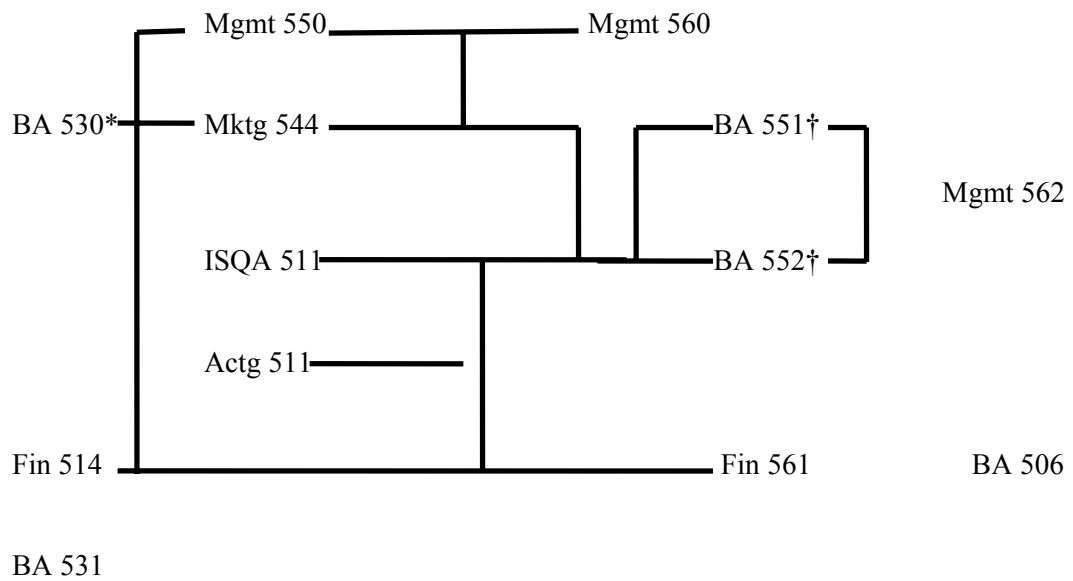
Number of Hours Waived: _____

Number of Hours Transferred: _____

Total number of MBA Credits Required (including waivers & transfers): 72

MBA Program Flow Chart

PSU SCHOOL OF BUSINESS ADMINISTRATION



*Must be completed in the first or second term.

†Must be taken concurrently.
